

# Evacuation & Sheltering Guide

## Stony Creek, CT

### PREPAREDNESS

Stony Creek's location makes it susceptible to a number of potential natural and manmade disaster situations. These include: hurricanes, winter storms, flash floods, tornados and hazardous material incidents.

Being prepared for such emergencies at home, work or school is crucial. Disaster can strike quickly and without warning, forcing you to evacuate your neighborhood, workplace or school, or to shelter in place under dangerous conditions.

The best way to insure your safety and that of your family is to plan ahead. Local officials will be on the scene during and after a disaster, except in cases of mandatory evacuation, but they cannot reach everyone right away. Your preparedness is your best insurance.

This guide is intended to assist you with:

- How to create a Disaster Plan and a Disaster Kit
- How to evacuate the affected area safely
- Where to find Branford shelters and what to take with you
- How the town will notify you in case of disaster
- How and when tropical storm and hurricane advisory information will be delivered
- Where to find other information sources.

### DISASTER PREPAREDNESS

#### How to create a disaster plan

Where will you be when disaster strikes?

How will you find each other?

Families should be prepared for all hazards that could affect their area. Branford Office of Emergency Management urges all families to develop a family disaster plan.

- Determine an out-of-state contact that all family members can contact if separated.
- Determine safe evacuation routes for specific circumstances (in flood times, avoid routes that typically flood).
- Know shelter locations.
- Make arrangements for pets.
- Know how to shut off utilities (electric, water, heating and cooking fuel, and generator).
- Store a 3-day supply of non-perishable food.
- Store 3 gallons of water per day per person for a 3-day minimum.

#### How to create a disaster kit

Assemble the following in easy-to-carry packs or bags:

- Basic first aid kit
- Battery-operated radio, flashlight and spare batteries
- Copies of all important paperwork (insurance plans—deeds, etc.)
- Prescription medications for 3 days
- Special items for infants, elderly or disabled family members, and pets
- Credit cards, cash, passport, driver's license, and spare car keys.

### EVACUATION

Stony Creek residents should be prepared to evacuate their homes, workplaces, schools or any other locations, when notified by Branford town officials to do so. Delays in evacuation could result in personal injury or becoming trapped in your home or vehicle.

It is vital that you plan the location in which you and your family (including elderly relatives living in the area) intend to shelter.

Whether you choose to evacuate out of the Branford area (to family, friend or hotel in another town), or utilize a Branford-operated shelter, *pre-plan your evacuation routes* using the following guidelines:

1. Plan a primary and secondary route using as many main thoroughfares as possible.
2. Plan primary and secondary routes to *all* of your sheltering options. Reminder—Branford officials may activate only the primary shelter (Murphy School) or others as needed. (Listed under "Shelters.")
3. Based on the emergency (winter storm v. hurricane, for example), different routes may be best, depending on terrain (hills or heavily wooded areas not advisable in winter storms) and potential flooding (hazardous during hurricanes).

• • •

**A map showing Town of Branford evacuation routes and shelter locations is on the last page of this guide.**

## SHELTERS

Local, state and federal officials provide community sheltering locations as needed in emergency situations. These shelters are opened and operated with the assistance of the American Red Cross (ARC).

*If you would prefer to shelter with family or friends outside of the affected area:*

Emergency officials recommend that you seek shelter *at least 15 miles away* from Branford. In the case of a hurricane, the location should be north of Long Island Sound. If this is your choice, be sure to make arrangements with the hosting family or friends well in advance.

*If you and your family choose to evacuate to a town-operated shelter:*

Know in advance where they are (listed below). Remember, *not all shelters will be opened* unless needed. To determine which shelters are open, refer to the "How will you be notified?" guidelines.

### Branford shelter locations

#### Primary Shelter

Mary T. Murphy School  
14 Brushy Plain Road (#1 on map)

#### Alternate Shelters

Branford Recreation Center  
46 Church Street (#2 on map)  
John B. Sliney School  
23 Eades Street (#3 on map)  
Walsh Intermediate School  
185 Damascus Road (#4 on map)  
Branford High School  
185 East Main Street (#5 on map)

### What to bring to shelters

- Sleeping bags or bedding, and pillows
- Items in "Disaster Kit," including a change of clothes
- Essential toiletries, towels, medications, etc.
- Games, cards, toys for children
- House pets must have cages, leashes and all other supplies, including food.

### What NOT to bring to shelters

- Sick or injured persons requiring specialized care—take them to an appropriate medical facility.

## HOW WILL YOU BE NOTIFIED?

### B-INFORMED Emergency Notification System

The Town of Branford sends out emergency alerts via the *B-Informed* Emergency Notification System. **You must sign up to receive these notifications!**

Go to either of the following websites and click "Community Alerts" to register:

[www.branford-ct.gov](http://www.branford-ct.gov)  
[www.branfordpolice.com](http://www.branfordpolice.com)

Or, go directly to:

[www.branford-ct.gov/B-informed](http://www.branford-ct.gov/B-informed)  
and click the Sign Up button



If you want this service but do not use a computer or internet services on a cell phone, call the police department at 203-481-4241 and ask to opt in to "B-Informed."

## Weather advisories

The National Weather Service and NOAA provide weather forecasts and alerts to ensure public protection and safety. Become familiar with the following terminology:

A **Tropical Storm Watch** is issued whenever tropical storm conditions are possible in a specified area of the watch, usually within 36 hours.

A **Tropical Storm Warning** is issued whenever tropical storm conditions are expected in the specified area of the warning, usually within 24 hours.

A **Hurricane Watch** is issued whenever hurricane conditions are possible in the specified area of the watch, usually within 36 hours. During a Hurricane Watch, prepare to take immediate action to protect your family and property in case a Hurricane Warning is issued.

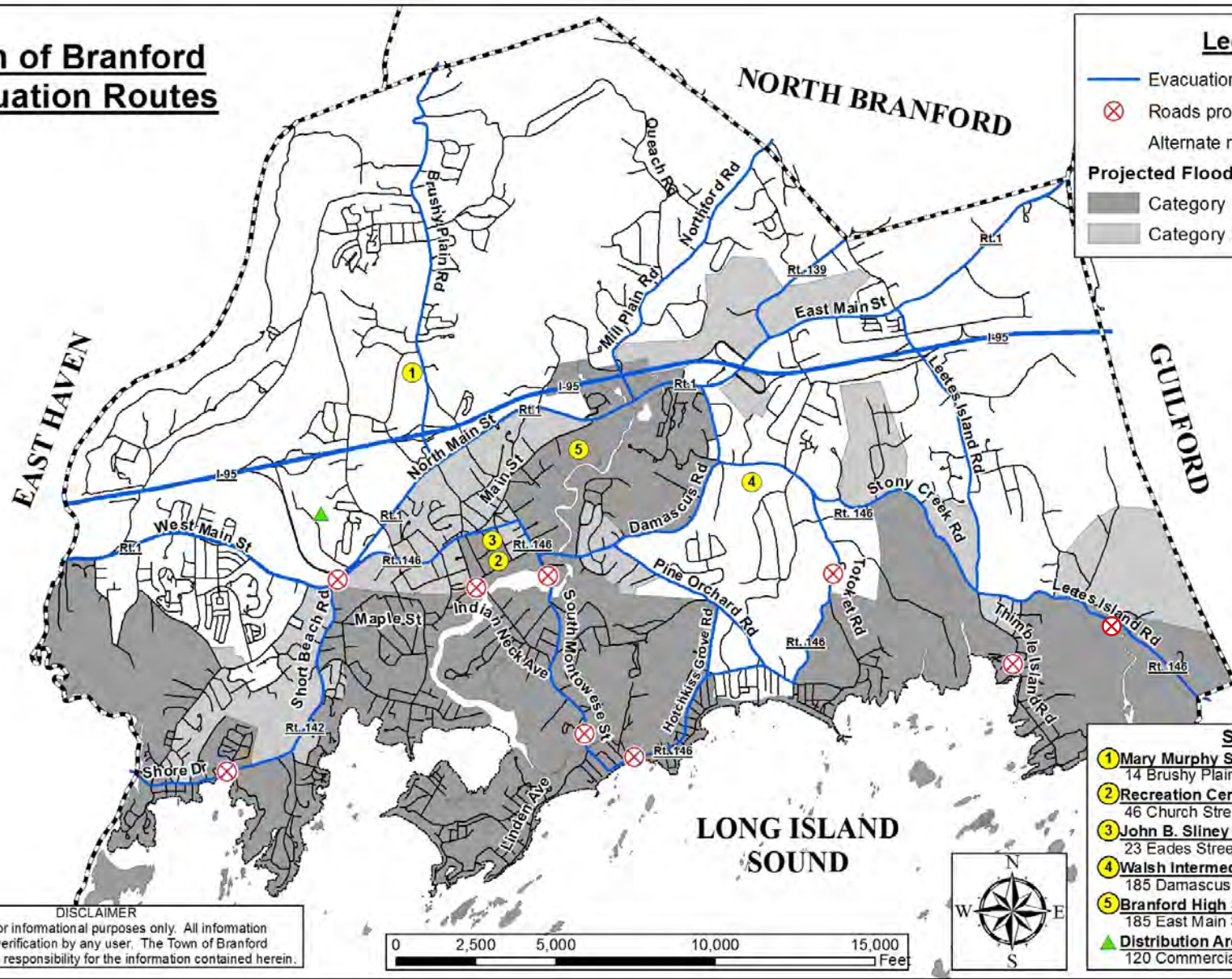
A **Hurricane Warning** is issued whenever hurricane conditions are expected in the specified area of the warning, usually within 24 hours.

## OTHER INFORMATION SOURCES

<a href="http://www.ready.gov">www.ready.gov</a>	<a href="http://www.weather.com">www.weather.com</a>
<a href="http://www.fema.gov">www.fema.gov</a>	<a href="http://www.redcross.org">www.redcross.org</a>
<a href="http://www.cdc.gov">www.cdc.gov</a>	<a href="http://www.branford-ct.gov">www.branford-ct.gov</a>
<a href="http://www.ct.gov/demhs">www.ct.gov/demhs</a>	<a href="http://www.branfordpolice.com">www.branfordpolice.com</a>
<a href="http://www.nhc.noaa.gov">www.nhc.noaa.gov</a>	<a href="http://www.branfordfire.com">www.branfordfire.com</a>

(Branford Police and Branford Fire Dept also available on Facebook and Twitter)

# Town of Branford Evacuation Routes



**Legend**

- Evacuation Routes
- ⊗ Roads prone to flooding -  
Alternate route suggested

**Projected Flood Inundation Zones**

- Category 1 & 2
- Category 3 & 4

**Shelters**

- 1 **Mary Murphy School (Primary Shelter)**  
14 Brushy Plain Road
- 2 **Recreation Center**  
46 Church Street
- 3 **John B. Sliney School**  
23 Eades Street
- 4 **Walsh Intermediate School**  
185 Damascus Road
- 5 **Branford High School**  
185 East Main Street
- ▲ **Distribution Area at Walmart**  
120 Commercial Parkway

**DISCLAIMER**  
This map is for informational purposes only. All information is subject to verification by any user. The Town of Branford assumes no legal responsibility for the information contained herein.

