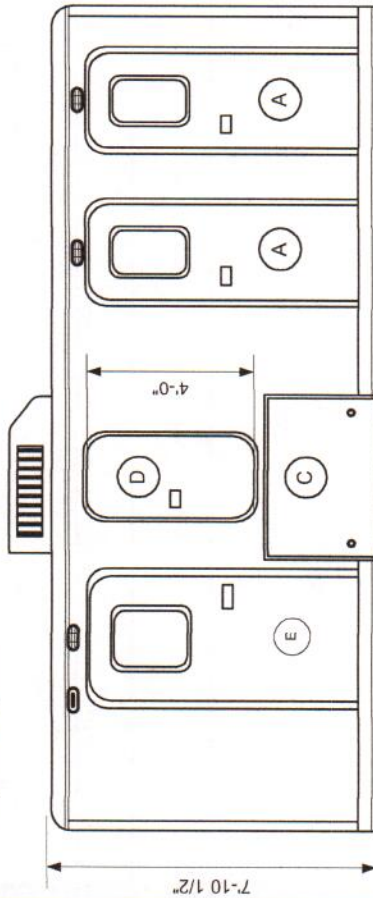


37,07357,900

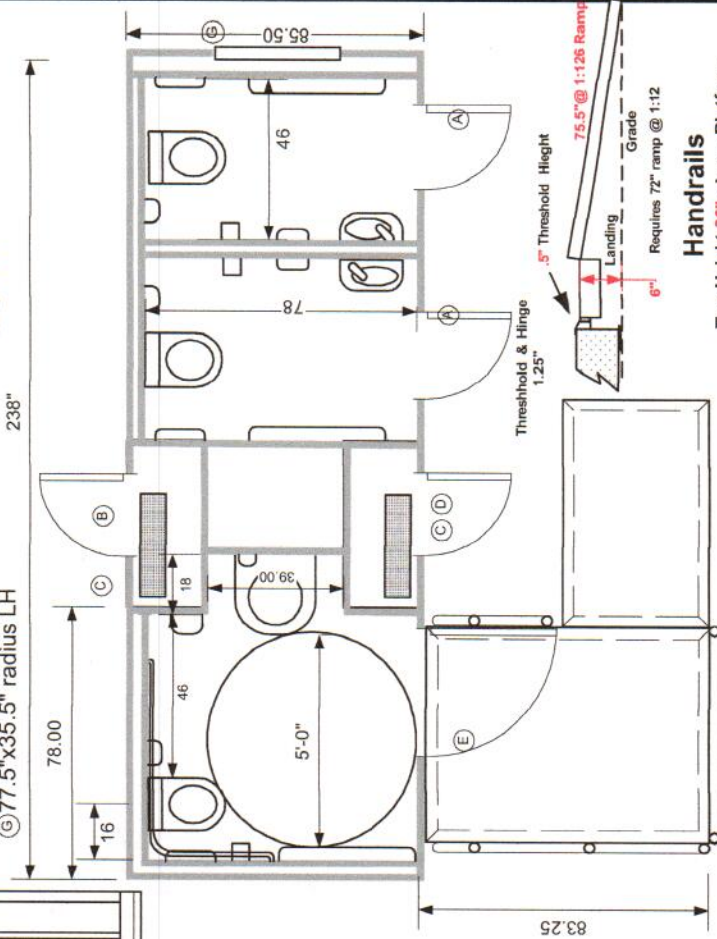


- (A) 78"x24" radius RH
- (B) 48"x24" radius LH
- (C) 32"x49" top hinge
- (D) 48"x24" radius RH
- (E) 78"x36" radius RH
- (F) 78"x24" radius LH
- (G) 77.5"x35.5" radius LH

# Omega 20 ADA 3ST 2010



238"



- ADA compliant to 2010 ADA Guidelines
- Lowes to ground & Container Shipable
- 2" camlock to 2" PVC hardpipe sewage adaptor
- Retractable trailer tongue
- Porcelain wall hung fixtures
- Stainless Steel Towel, tissue and soap dispensers
- Gel type battery & Granitised steel flooring
- Electric over Hydraulic Disk Brakes
- 3 Jets Marine Toilets & 10NT VOD Vacuumator
- Uses around one pint per flush
- Heat Pump & Air Conditioned** 15,000btu / 5,500 btu heat
- Ducted ventilation and 10 gal. SS trash recepticals
- Obscure skylights in radius doors
- Vandal resistant pebble finished wall panels
- Double foil radiant barrier insulation
- 10,000 pound retractable suspension
- 17.5 x 6.75 16 ply Radial Tires & wet bearings
- All metal and composite construction
- LED 50,000 hour burn automatic lighting and trailer lighting
- Dawn to dusk LED porch lighting
- Liquefies all waste paper and hygienic products
- Automatic Electric Leveling Jacks 16,000 lb. max.
- Self Pumping to Sewer Tap up to 100 yards w/10' head
- Two separate 110volt power inlets
- Aluminum ADA ramp w/Stainless steel railing
- Wheel cover doors and flush door latches
- 4" curbs are optional on ADA landing

These restrooms are designed to be compliant with all current guidelines as we are aware of. Many guidelines have gray areas and points open to interpretation. Different entities may have differed interpretations or local differences. We suggest getting approvals of final plans from the authorities in the local the unit will be placed

### Handrails

Top Height 36" above Platform  
Top of Cross Bars 14" below bottom of Top Rail. Railing 1.5" OD Diameter and slides into 4" piece of 1.5" ID pipe welded to landing.

Requires 72" ramp @ 1:12

Threshold & Hinge 1.25"

5" Threshold Height

6"

Grade

75.5" @ 1:126 Ramp

This document is the property of and contains unpublished proprietary information and trade secrets of A.M.S. Global Inc. By accepting possession of the document the recipient agrees to make no copies, transcriptions or any use of this document or the information contained herein except as authorized by A.M.S. Global Inc. and further agrees to safe keep this document and return it to A.M.S. Global Inc. upon demand.



Approved by \_\_\_\_\_





# Omega J-ADA5

[www.AMSglobal.US](http://www.AMSglobal.US)

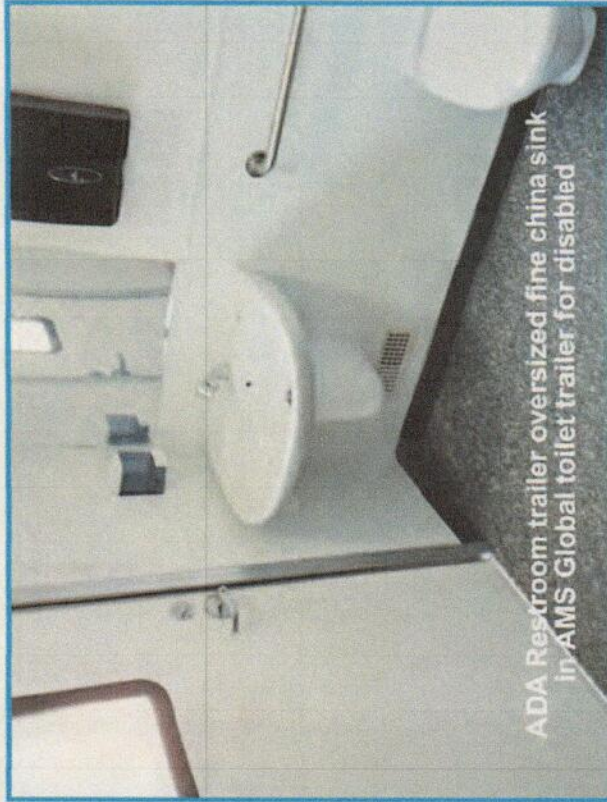
## Omega

J-Series Toilet Trailers  
By AMS Global Inc.





# Omega J-ADA5



ADA Restroom trailer oversized fine china sink in AMS Global toilet trailer for disabled



PH: (800) 789-1212  
FAX: (903) 667-2515  
www.AMSglobal.US



## Un-matched Standard Features

- 5 private, unisex bathrooms with one being ADA compliant
- 10,000 lb. retractable axle system
- Remote controlled electric leveling jacks
- Hydraulic surge disk brakes
- LED safety and trailer lighting (30,000 hour burn)
- JETS vacuum flush toilets flushing with 1 pint of water
- JETS vacuumerator pump (liquefies and pumps waste up to 300' away)
- 500 gallon waste tank (4,000 flushes)
- 250 gallons of fresh water capacity
- Roof Mounted AC/Heat with remote thermostat
- Closed cell foam insulation with radiant, reflective and vapor barrier
- Mirror, waste basket, and sanitary napkin receptacle
- High quality porcelain sink with metered faucet
- Walls consist of FRP bonded to waterproof, rot-proof, and mold resistant durable poly substrate

## Exclusive lowering suspension

Remote-controlled axle lowering system allows trailer to rest on the ground

## JETS vacuum toilet system

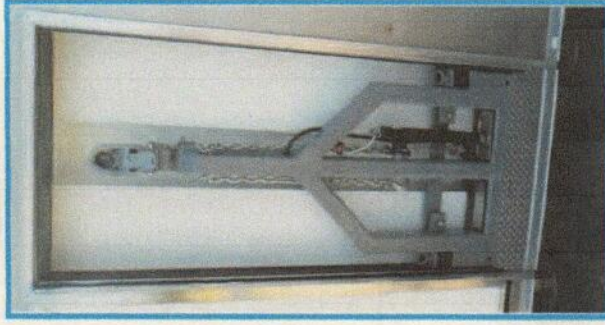
JETS vacuum flush toilets with super heavy duty macerating pump allows for on-board waste collection OR direct connection to sewer. All steel and composite components allow for easy cleaning and years of rot free service

## Superior logistics

Retractable tongue allows 2 units to ship in 40' high cube container 19' 10" X 7' 2" steel frame with 4' retractable tongue

## ADA Portion

- ADA compliant toilet with push button auto flush
- High clearance sink with metered faucet
- Compliant hand rails and grab bars
- Full 60" interior turning radius
- ADA compliant landing and ramp



Sanitation Solutions for the World  
Today Tomorrow & Beyond



